

## NUCLEON

### NUCLEON IN POTATOES SISTERS CREEK, TAS, 2022 TRAIL SITE 2

#### Nucleon features

- Liquid enzyme additive containing lipase and mannanase to enhance nutrient uptake in horticultural crops
- Helps stimulate native microbial populations
- Can be applied with liquid fertilisers at planting, through dripline or side dressed in crop
- Helps improve soil and plant health, growth and yield

#### Treatments

- To determine the potential of Nucleon to increase yield of processing potato variety Russet Burbanks

Treatments	Rate
Nucleon split rate	50mL/ha in-furrow at planting 50mL/ha spray rig applied at bandwidth 100%
Fertiliser pre plant	0.6.17 @ 1500kg/ha
Fertiliser in-furrow	10.11.10.4 Platinum Nergentic @ 2800kg/ha
Metalax G* Fungicide in-furrow	20kg/ha

- Potatoes 1 in 5 year rotation
- Planted 27 Oct 22, yield assessment 15 Mar 22
- Row spacing 900mm
- Nucleon applied in-furrow with Metalax G Fungicide



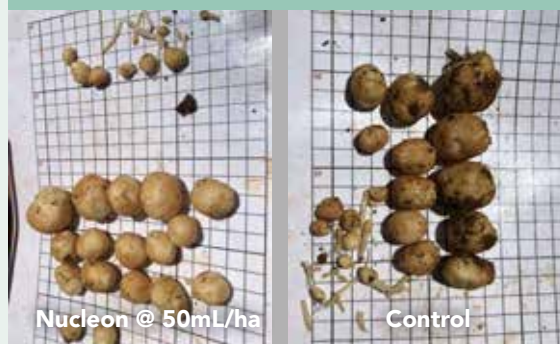
#### Trial highlights

- Total yield increase for Nucleon treatment of 2.5t/ha
- Premium potato yield increase for Nucleon treatment of 1.6t/ha

##### Early tuber development



##### Early tuber bulking

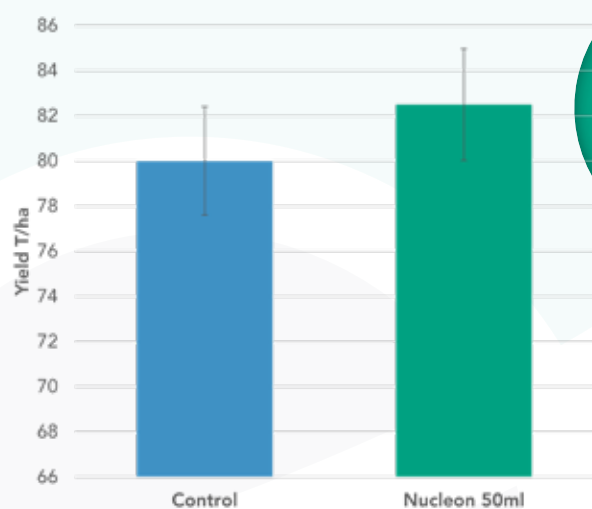


**Total yield  
increase of  
2.5T/h**



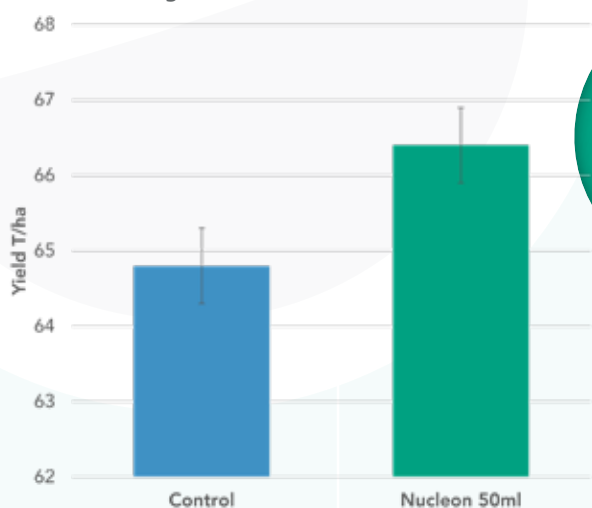
## NUCLEON IN RANGER RUSSETS SISTERS CREEK, TAS, 2022 - TRIAL SITE 2

### Yield estimate



TOTAL YIELD  
INCREASE OF  
2.5T/ha

### Premium yield estimate



TOTAL YIELD  
INCREASE OF  
1.6T/ha

The information provided in this Info Sheet is an extract and does not constitute the full Directions for Use. PLEASE READ THE PRODUCT LABEL THOROUGHLY BEFORE USE.

\* Registered product